

With two vertical rising sashes the Double Sided Fume Hood provides containment as a Ventilated Enclosure. The double Sided Fume Hood can be used as a stand alone demonstration style Hood or as a pass through between rooms such as a Prep Room and Class Room. It is important to note that a Double Sided Fume Hood does not offer the same level of personal protection that a typical Airfoil style Hood does. Consideration should be given to the application and materials being used in the Hood prior to specifying.

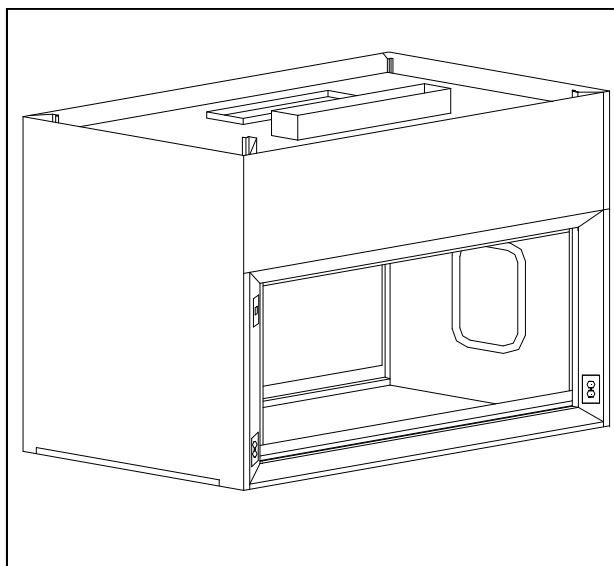
Design

To minimize turbulence as air enters the Double Sided Hood the entrance of the hood is framed with angled members which direct air smoothly into the Hood. A lower airfoil on each side maintains a 1" space below the closed sash that allows air to flow continuously across the work surface.

Two full view PVC framed laminated safety glass sashes provide a clear unobstructed view of the Hood interior from either side. The sashes feature a full width pull and a counter balance system for easy up / down action of the sash. The interior end and top panels of the Hood are fabricated of white Resin-Chem and the exterior is chemical resistant powder coated steel.

The double wall construction of the hood provides space for installation of electrical and plumbing fixtures. Electrical fixtures can be specified in all four posts of the Double Sided Hood. Plumbing fixtures can be specified in any two of the four posts.

Fume Hood Superstructures are available in widths from 48" to 72", special sizes available upon request. Service and electrical fixtures shown are optional and must be ordered separately.

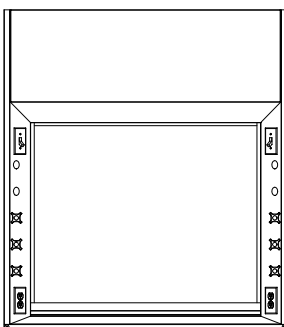


Interior Lighting

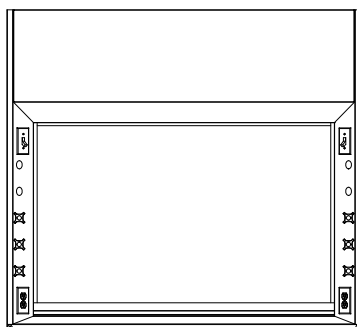
A maximum width, two tube fluorescent light fixture, complete with tubes, is provided with the Double Sided Fume Hood.

Options

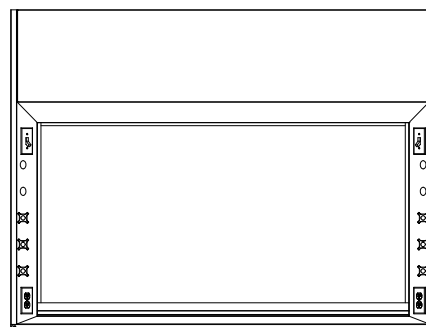
Choose from an array of plumbing and electrical fixtures to tailor the Double Sided Fume Hood to the desired application. Sash stops to limit the opening of the sashes and sash interlocks to limit the opening to only one sash at a time are also available.



B-604DS 48"



B-605DS 60"



B-606DS 72"

Double Sided Fume Hood Assemblies

Double Sided Fume Hoods are available as a complete assembly.

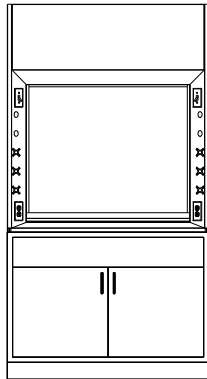
Detailed information on base cabinets, countertops and service fixtures can be found in the following pages.

Assemblies consist of a standard base cabinet, "U"

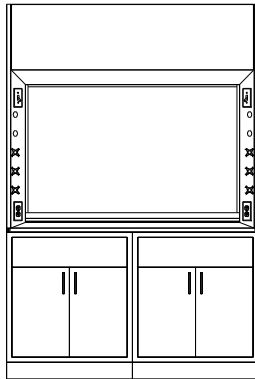
shaped finished back panel, dished epoxy resin counter-top, F-400 3" X 6" cupsink, five F-100 service fixtures, F-110 cold water fixture, F-200 light switch, F-210 blower switch and two F-220 110V duplex outlets.

60" and 72" assemblies have two standard base cabinets.

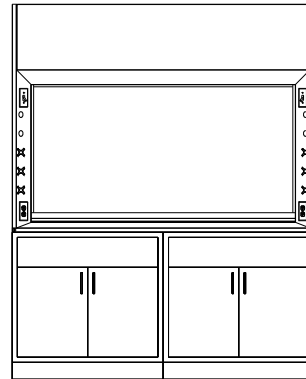
Service and electrical fixtures are shipped loose for installation in the field.



B-9040DS 48"

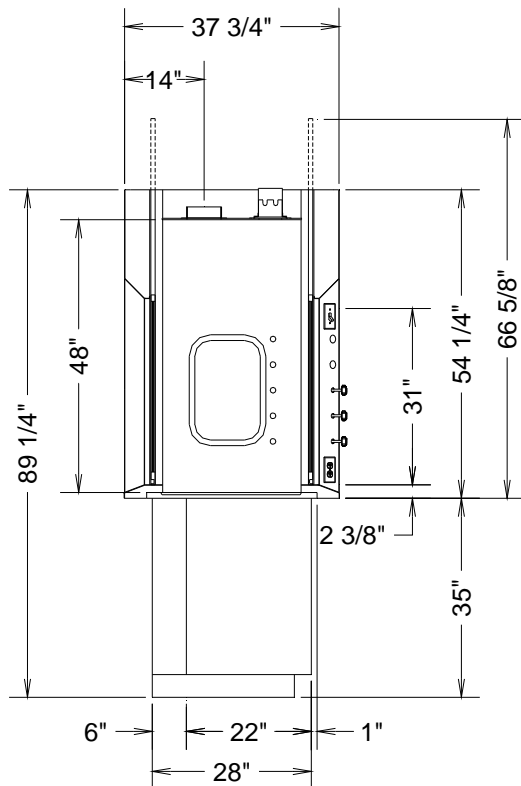


B-9040DS 60"



B-9040DS 72"

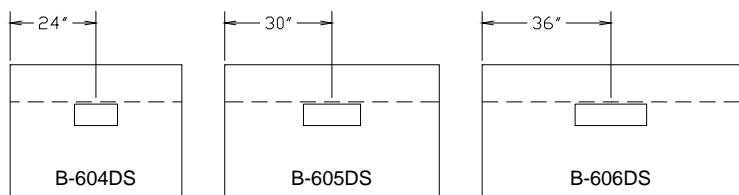
Rough-in Details



HOOD SIZE	COLLAR SIZE	100 FPM	
		CFM	S.P.
48"	6" X 16"	1307	.61
60"	6" X 20"	1709	.64
72"	6" X 24"	2111	.67

The static pressures listed above are for the hoods only. An appropriate amount will have to be added to this figure to compensate for the pressure drop through the duct system. The total pressure drop through the hood and the duct system must be known to select the proper exhaust blower.

CFM and static pressures listed above are based on one sash full open and the other closed.



Duct collar locations are as shown above. The centerline of the collar is 14" from the rear face of the hood. The area indicated by the dashed lines is designated for plumbing and electrical rough-ins. All rough-ins should be kept within the 6" space and 18" from the floor.