



ATS TABLE

INSTALLATION, OPERATION & MAINTENANCE MANUAL

SAVE FOR YOUR REFERENCE

2024

Important Installation Instructions



Thank you for your purchase. The ATS is a modular table system that is adjustable, adaptable and can be furnished with plumbing and electrical services to meet the requirements of almost any application. The components of the unit are plumbed and wired at the factory and assembled in the field. The use of special internal connectors enable easy electrical connection of the components.

This furnishing is designed to be assembled by a team of factory certified installers. A minimum of two people is required, however a team of three to four installers is highly recommended. Qualified tradespeople are recommended for all electrical, gas and plumbing installations.

Prior to installation:

- Read this manual carefully and thoroughly before beginning the installation.
- Inspect the furnishing for possible shipping damage. Do not install any product showing signs of damage.
- Do not substitute any other parts for fasteners or other items supplied with the unit.
- Make sure all required tools and materials are available.
- Verify installation layout, location and correct configurations of all units before proceeding.
- Refer any questions or problems to our Customer Service Department at:

BMC
P.O. BOX 4089
MUSKEGON, MI 49444
231-733-1206
www.bmclab.com

Please provide the model number of the unit and a complete description of the question or problem so we can assist you better.

This unit is designed to leave the manufacturing facility meeting proper safety guidelines. Items must be installed properly and in accordance with all local codes and ordinances to maintain the safety of this unit.

The compatibility of all provided service lines with the specific medium they will carry must be verified to meet all local codes and ordinances. The maximum working pressure of the service lines shall not exceed 60 psi and 66° C. The installation shall be in accordance with NFPA 45, Fire Protection for Laboratories Using Chemicals. Final installation shall also include proper labeling of all gas lines and fittings per the Scientific Equipment and Furniture Association SEFA 7 Recommended Practices for Laboratory and Hospital Fixtures.

As BMC continually improves our products, the specifications, information and illustrations provided are subject to change without notice. Dimensions are nominal.

Please visit our Website at www.bmclab.com for the most current product information.

Important Safety Instructions



To prevent possible electric shock or product damage, read and observe all instructions prior to installation and use of this unit.

When using an electrical furnishing, basic precautions should always be followed, including the following:

- Read all instructions before using this furnishing.

WARNING

RISK OF ELECTRICAL SHOCK

Furnishing has multiple cords. Make sure all cords are unplugged before servicing or cleaning.

AVERTISSEMENT

RISQUE DE CHOC ÉLECTRIQUE

Le mobilier comporte plusieurs cordons. Assurez-vous que tous les cordons sont débranchés avant l'entretien ou le nettoyage.

DANGER: To reduce the risk of burns, fire, electric shock or injury to persons:

- Unplug cord(s) from the electrical outlet(s) before putting on or taking off parts.
- Unplug all power cords and connections (there may be more than one) before moving or servicing this unit.
- Close supervision is necessary when this unit is used by or near children, invalids, or disabled persons.
- Use this furnishing only for its intended use as described in these instructions. Do not use attachments or accessories not recommended by manufacturer.
- This furnishing is intended for commercial use only.
- Never operate this furnishing if it has a damaged cord or plug. Never operate this furnishing if it is not working properly, has been damaged or has been exposed to water. Contact a qualified service person for examination and repair of the furnishing.
- Keep the power cord(s) away from heated surfaces.
- When disconnecting attachments or accessories, turn the controls off, then remove the plug(s) from the outlet(s).
- Do not use this furnishing outdoors.
- Always load heavier equipment and items as low as possible on the unit to lessen the possibility of the furnishing tipping over or heavy objects falling on the operator.
- Some parts may contain sharp edges. Wear protective gloves during installation, if necessary.

Important Safety Instructions-Cont'd



**WARNING
RISK OF ELECTRICAL SHOCK**

Connect this furnishing to a properly grounded outlet only. See grounding instructions.

**AVERTISSEMENT
RISQUE DE CHOC ÉLECTRIQUE**

Connectez ce meuble uniquement à une prise correctement mise à la terre. Voir les instructions de mise à la terre.

DANGER: Improper connection can result in a risk of electric shock. To reduce the risk of electric shock:

- Do not modify the plugs provided with the unit.
- If the plugs do not fit properly into the outlets, have the correct outlet installed by a qualified tradesperson.
- If you are in doubt whether the unit is properly grounded, check with a qualified electrician or service person.

GROUNDING INSTRUCTIONS:

This unit must be grounded to reduce the risk of electric shock. In the event of a malfunction or breakdown, grounding provides a path of least resistance for electric current to reduce the risk of electric shock. This furnishing is equipped with specific electric cords and plugs having equipment-grounding conductors and grounding plugs. Units furnished with electrical services are equipped with power supply plugs which must be plugged into appropriate outlets that are properly installed and grounded in accordance with all local codes and ordinances.

This product is rated at 125V, 16A, 60 Hz per circuit or 240V, 16A overall. The unit is factory-equipped with specific electric cords and plugs to permit connection to proper electric circuits. Make sure that the product is connected to outlets having the same configuration as the plugs. No adapters should be used with this product. If the product must be reconnected for use on a different type of electric circuit, the reconnection should be made by qualified service personnel.

Important Safety Instructions-Cont'd



**WARNING
RISK OF INJURY
MAXIMUM LOAD**

Shelves and work surfaces not furnished with the table shall be provided with instructions to thoroughly review the specifications for the table that this work surface and/or shelves are intended to be used with, to determine if the work surface and/or shelves are appropriate for use with the table. Surfaces greater than 10 sq. ft. (0.93 sq. m.) shall have a flame rating of 200 or less and either a smoke-developed index of 450 or less. Load rating for shelves and work surfaces not furnished with the table...

- Shelves: 2.5lbs per inch of width, less the weight of shelf.
- Work surface 4.7lbs per inch of width or 200lbs (whichever is greater), less the weight of work surface.

**AVERTISSEMENT
RISQUÉ DE BLESSURE
CHARGE MAXIMALE**

Les étagères et les surfaces de travail non fournies avec la table doivent recevoir des instructions pour examiner minutieusement les spécifications de la table avec laquelle cette surface de travail et/ou ces étagères sont destinées à être utilisées, afin de déterminer si la surface de travail et/ou les étagères sont appropriées pour utiliser avec la table.

Les surfaces supérieures à 10 pieds carrés (0,93 m²) doivent avoir un indice de flamme de 200 ou moins et un indice de dégagement de fumée de 450 ou moins.

Capacité de charge pour les étagères et les plans de travail non fournis avec la table...

- Étagères : 2,5 lb par pouce de largeur, moins le poids de l'étagère.
- Surface de travail 4,7 lb par pouce de largeur ou 200 lb (selon le montant le plus élevé), moins le poids de la surface de travail.

Prior To Installation



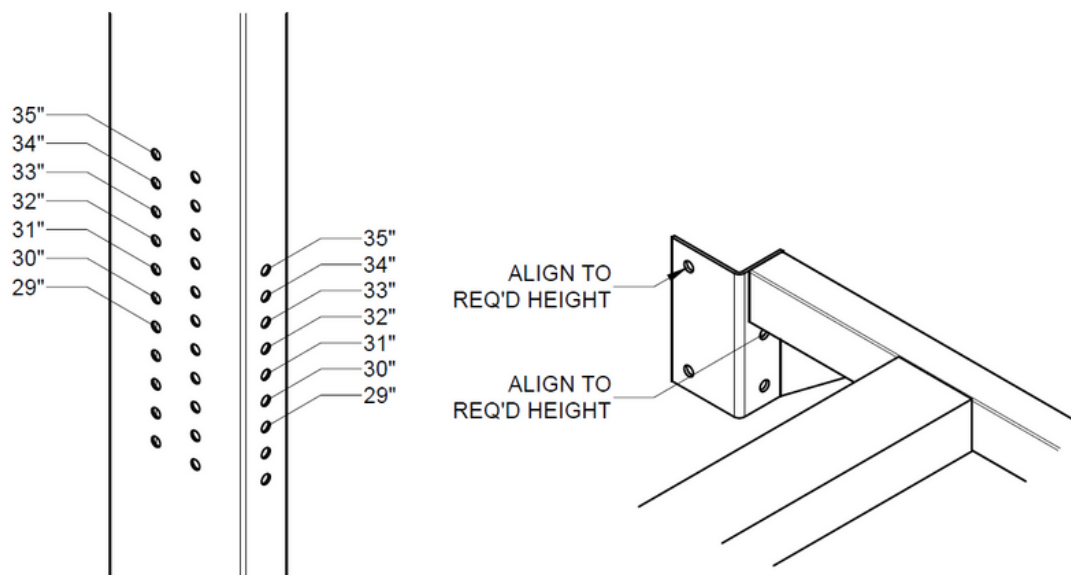
Tools Required (Not Included):

- Tape Measure
- Level
- Cordless Drill with Phillips Bit or Phillips Screwdriver
- 7/16" open / box end wrench
- 9/16" open / box end wrench
- 7/16" socket
- 9/16" socket
- 3" extension
- Ratchet for Socket
- Wood mallet

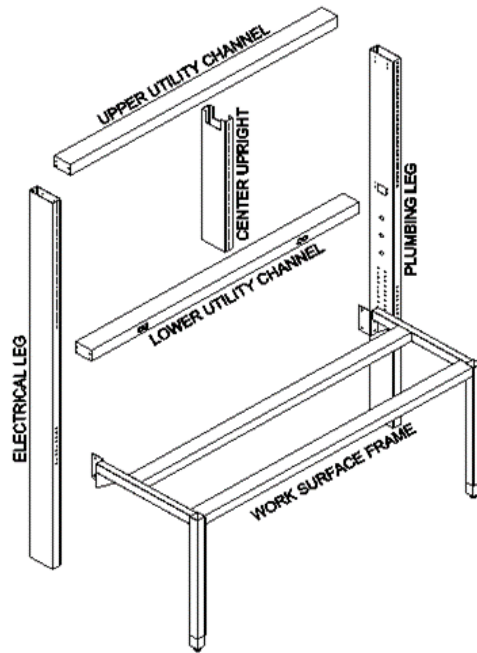
WORK SURFACE HEIGHT VERIFICATION:

Verify the height of the finished worksurface. This unit can be set at 29", 30", 31", 32", 33", 34" and 35" in height (without the worksurface).

This manual is intended to be used along with the Shop Drawings for assembly and installation. Refer to the Project Shop Drawings for actual configurations and options.



ATS Table Assembly

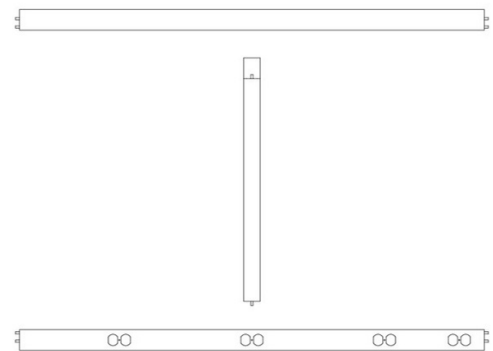


STEP 1

- a.) Remove the center cover from the Upper and Lower Utility Channels.
- b.) Arrange the Upper and lower Utility Channels and Center Upright as shown in figure 2. Note that the Lower Utility Channel is deeper than the Upper Utility Channel and the cord / plug end of the Upper Utility Channel should attach to the Plumbing Leg.
- c.) Insert the threaded studs on the Center Upright into the holes on the Upper and lower Utility Channels. Install a 1/4-20 nut to each stud and loosely tighten.

Note: Single sided tables are either left hand or right hand. These instructions are for a right hand table, adjust procedure for a left hand table.

Figure 2



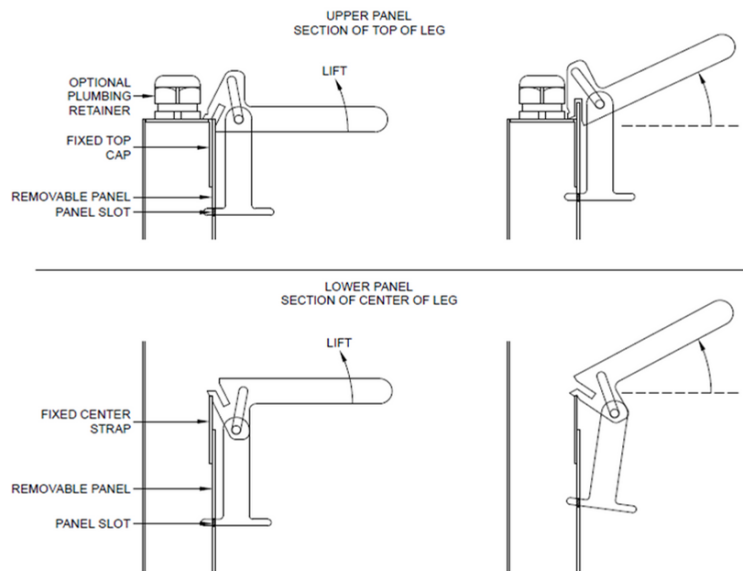
ATS Table Assembly



Figure 3

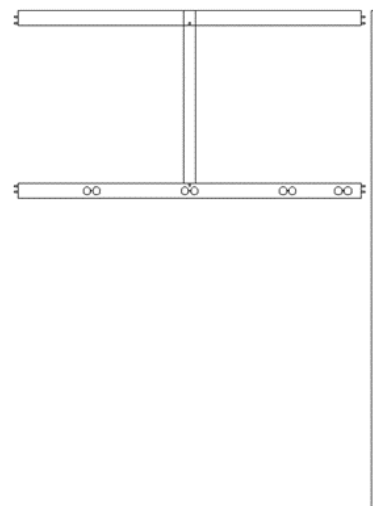
STEP 2

a.) Remove the two cover plates on the Plumbing Leg by using the provided panel removal tool. Remove the upper cover first by positioning the tool as shown in Figure 3. Insert the leg of the tool into the slot in the panel and lift up. Remove the lower panel by turning the tool upside down and repeat the procedure.



- b.) Position the Plumbing Leg next to the Utility Channels as shown in Figure 4 with the open access to the outside of the table.
- c.) If data cables are provided on the Lower Utility Channel, insert the cables through the rectangular opening in the Plumbing Leg. Route the cables to the top of the leg and insert them through the rectangular holes at the top of the leg.
- d.) Insert the threaded studs on the Utility Channels into the holes in the leg. Install a 1/4-20 nut on each stud and loosely tighten.

Figure 4



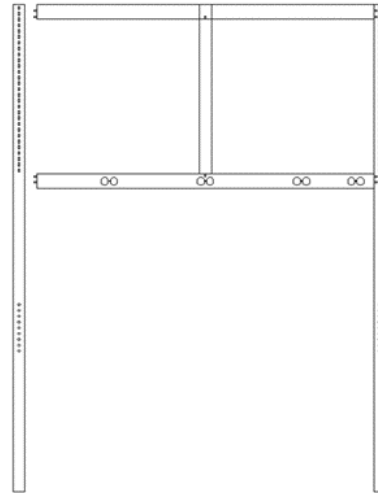
ATS Table Assembly



STEP 3

- a.) Remove the two cover plates from the Electrical Leg as described in Step 2.
- b.) Position the Electrical Leg next to the Utility Channels as shown in Figure 5, with the open access to the outside of the table.
- c.) Insert the electrical plugs from the Upper and lower Utility Channels through the openings in the Electrical Leg and plug them into the mating plug in the leg. Male and female plugs are labeled with a number, match the numbers for correct connection.
- d.) Insert the threaded studs on the Utility Channels into the holes in the leg. Install a 1/4-20 nut on each stud and loosely tighten.

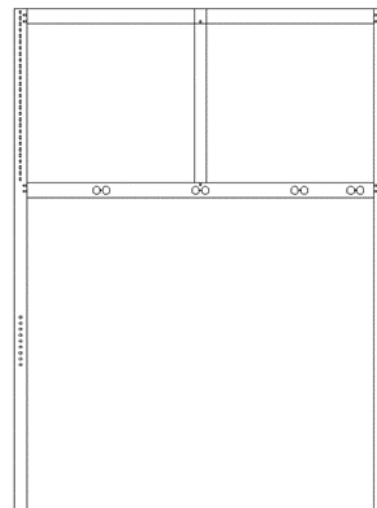
Figure 5



STEP 4

- a.) Tighten all of the 1/4-20 nuts on the Center Upright and Utility Channels.
- b.) Replace the center covers on the Upper and lower Utility Channels.

Figure 6



ATS Table Assembly



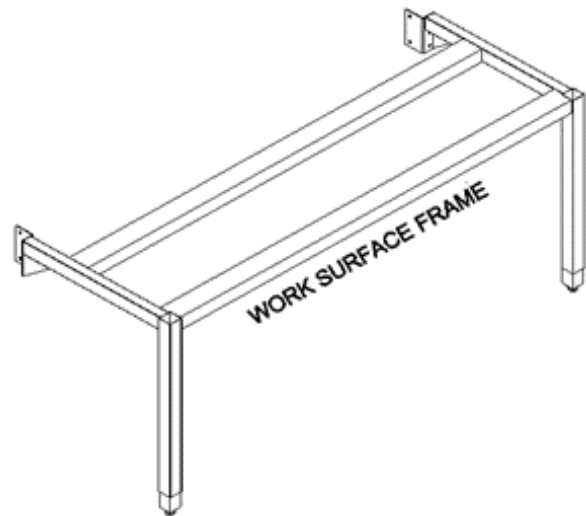
STEP 5

a.) Position the adjustable legs on the Work Surface Frame to the desired height by removing the screws and telescoping the leg to the correct position. Replace and tighten screws.

b.) Refer to page 5 to identify the correct mounting hole position. With the assistance of another person(s), lift the leg assembly to the vertical position. Align the Work Surface Frame with the corresponding holes in the legs and insert a 3/8-16 bolt into the holes. Position the shroud, located inside the leg, to align with the bolts at the correct height setting. When properly installed the shroud should cover the unused holes in the side of the leg. Install a 3/8-16 nut on each of the four bolts on each side and tighten them.

c.) Replace the removable covers on the legs. Start with the lower cover by inserting the hooks into the slots and push the panel down. Follow by doing the same with the upper panel.

Figure 7



Shelving & Workspace



STEP 6

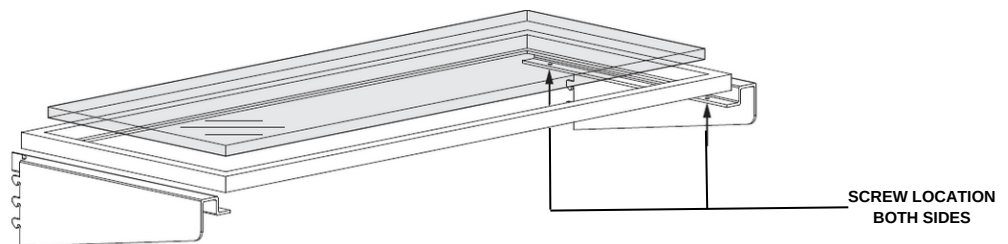
- Install the shelf brackets into the Legs and Center Upright.
- Position the shelves on the brackets and install six self tapping screws through the brackets to secure the shelf.



Upper Shelf:

- Place shelf or shelf frame on the brackets, aligning the front of the shelf or frame with the front of the bracket.
- Secure with wood screws (wood, plastic laminate or phenolic resin) or self-tapping sheet metal screws (metal or glass framed) using the holes in the bracket.
- If shelf is glass, carefully place the glass into the frame, using plastic bumpers to cushion the glass.
- Position the assembled shelf onto the table frame by lifting and dropping the bracket tabs into the holes in the leg and center upright.

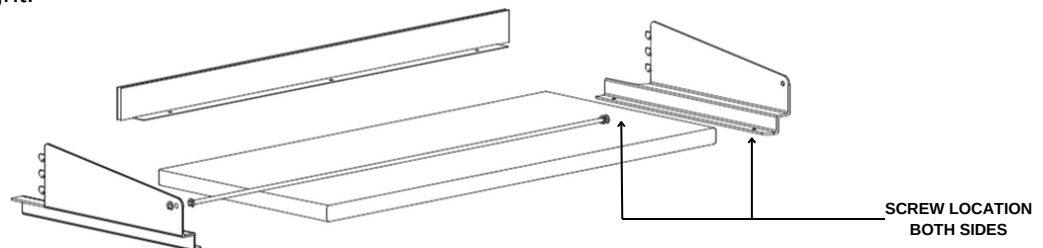
Figure 8



Lower Shelves:

- Attach the optional rear stop to underside of shelf using wood screws (wood, plastic laminate or phenolic resin) or self-tapping sheet metal screws (metal or glass framed) through the holes in the rear stop.
- Place shelf or shelf frame on the brackets, aligning the front of the shelf or frame with the front of the bracket. Secure with wood screws (wood, plastic laminate or phenolic resin) or self-tapping sheet metal screws (metal or glass framed) using the holes in the bracket.
- If shelf is glass, carefully place the glass into the frame, using plastic bumpers to cushion the glass.
- Attach the optional front retainer rod by bowing it slightly and inserting the ends into the holes in the shelf bracket.
- Position the assembled shelf onto the table frame by lifting and dropping the bracket tabs into the slots in the leg and center upright.

Figure 9



Shelving & Workspace



STEP 7

- a.) After assembly of the table legs, frame and shelves prepare for countertop installation.
- b.) Move table into position and level.
- c.) Place small dabs of silicone on the top of the frame. Carefully position the worksurface onto the frame, ensuring the cutouts in the worksurface are centered around the legs. Check that the worksurface is straight and centered, then clamp in place. Clean any excess adhesive residue and cure according to the manufacturer's instructions.
- d.) Plug electrical, plumbing and data cords into the Ceiling Panel.

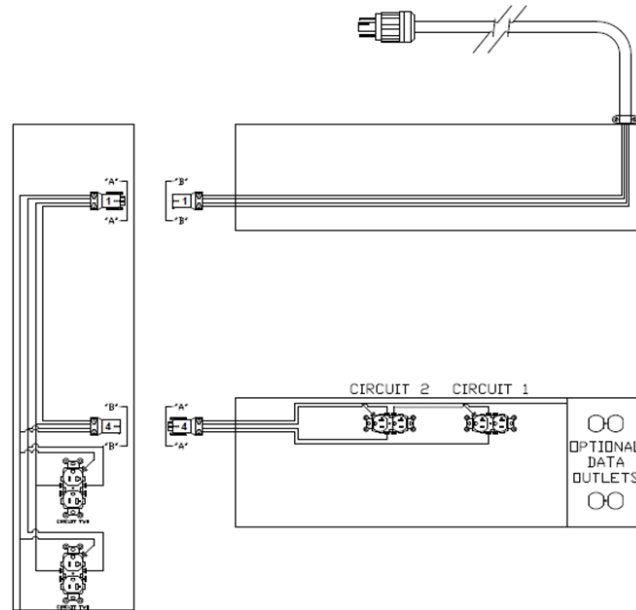
Note:

Ceiling Panel needs to be installed in collaboration with the ceiling contractor, plumber and electrician as required.

Electrical Connections



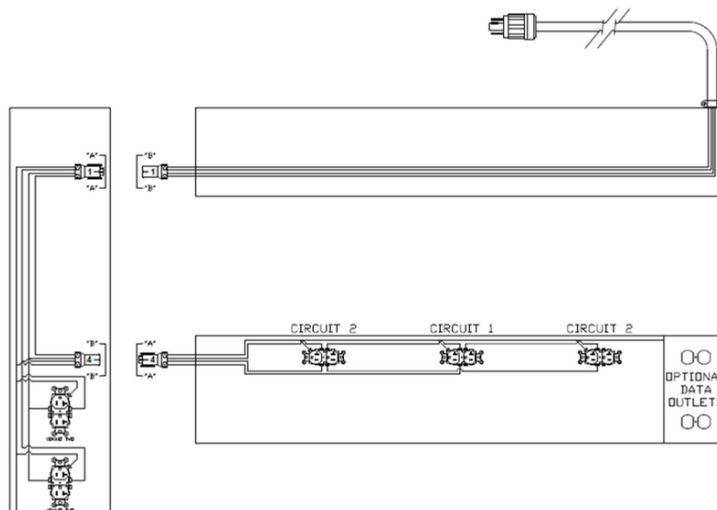
Electrical Connection, Single Sided, 48" Wide and Under



Note: Graphic is not to scale.

1. Locate the mating plugs (A-B) for the electrical connections.
2. Align and push straight together until the latch engages the latching tab.

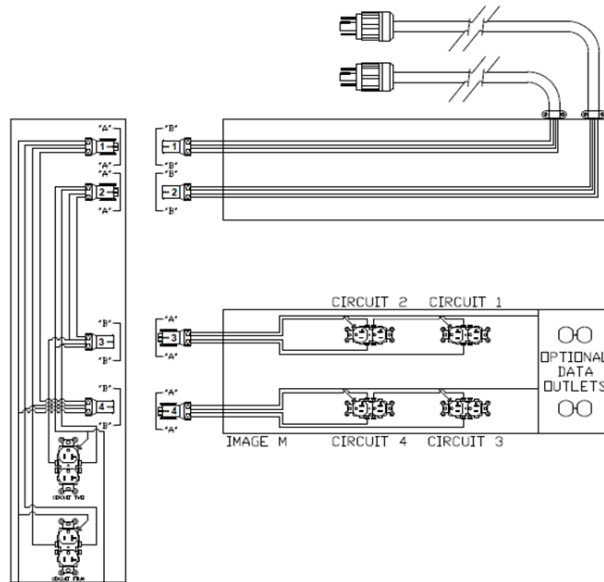
Electrical Connection, Single Sided, Over 48" Wide



Electrical Connections



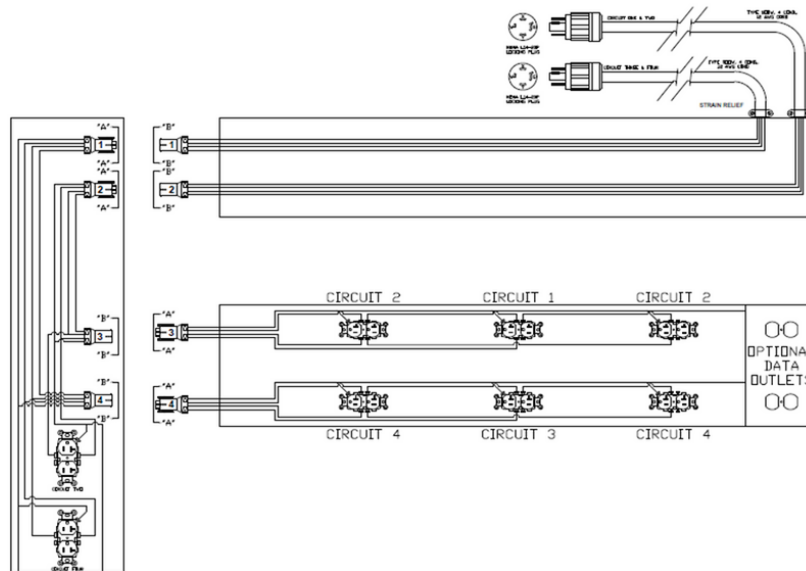
Electrical Connection, Double Sided, 48" Wide and Under



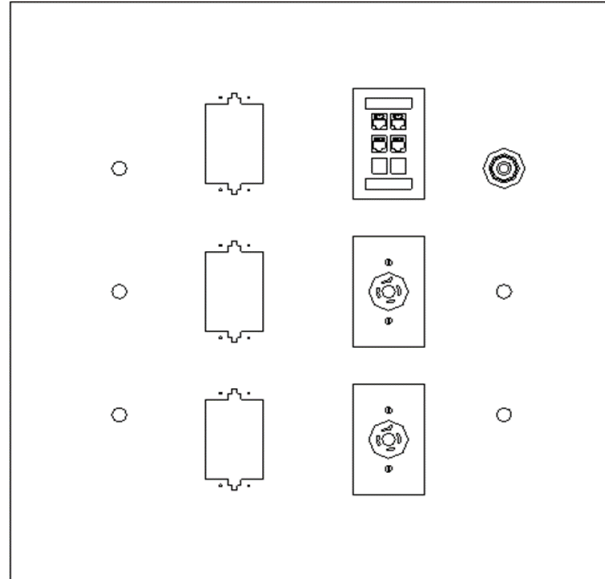
Note: Graphic is not to scale.

1. Locate the mating plugs (A-B) for the electrical connections.
2. Align and push straight together until the latch engages the latching tab.

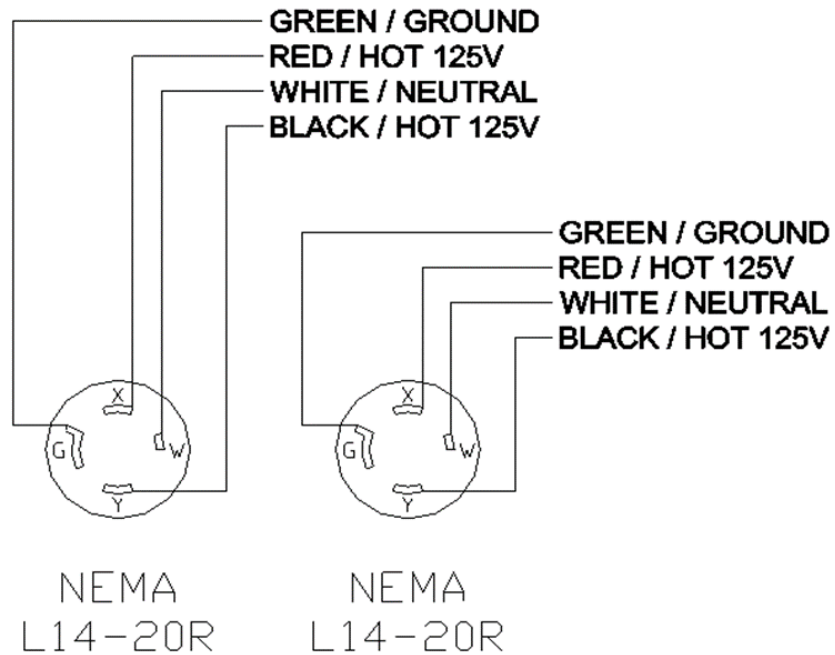
Electrical Connection, Double Sided, Over 48" Wide



Ceiling Service Panel



A typical ceiling Service Panel may have one, two, three or four NEMA L14-20R outlets.



Important Maintenance Information



Facilities Maintenance:

- a.) Periodically check and tighten the attachment socket head cap screws, especially during the first few weeks of service.
- b.) When adjusting shelves, have adequate personnel available to lift and move them, especially longer units.
- c.) Qualified tradespersons are recommended for all electrical, plumbing and gas installations.
- d.) Connecting, disconnecting or changing services at the ceiling panel must be done by a qualified person. Always use a ladder to reach the panel - DO NOT stand on the table.

User Maintenance:

This furnishing is a modular system intended for use by properly trained professional laboratory workers. The user is the single most important safety feature in any laboratory!

- a.) Other than cleaning and relamping, all service and maintenance should be performed by qualified personnel.
- b.) Only use cleaning agents recommended for use by the manufacturer or qualified maintenance personnel.
- c.) Keep the worksurface clean and uncluttered. Clean up any chemical spills immediately.
- d.) Keep any power cord(s) away from heated surfaces.
- e.) When disconnecting attachments or accessories, turn the controls off, then remove the plug(s) from the outlet(s).
- f.) Prior to relamping, unplug the light and allow the lamps to cool.